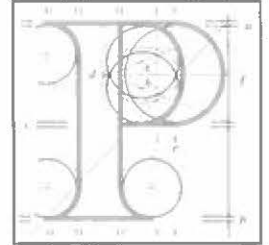


Your Ref:



Jim Barreiro De Leon
V. Ships Leisure USA LLC
1850 SE 17 Street
Suite 200
Fort Lauderdale, FL 33316
USA

7th March 2014

**Re: Galway Harbour Extension
Renmore and Townparks Townlands, Galway**

Dear Sir,

An Bord Pleanála has received your recent submission in relation to the above mentioned proposed development and will take it into consideration in its determination of the matter. A receipt for the fee lodged is enclosed.

The Board will revert to you in due course with regard to the matter. If you have any queries in the meantime please contact the undersigned officer of the Board.

Please quote the above-mentioned An Bord Pleanála reference number in any correspondence or telephone contact with the Board.

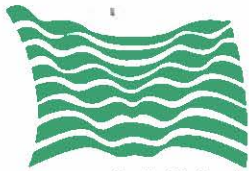
Yours faithfully,

Kieran Doherty

Kieran Doherty
Executive Officer
Direct Line: 01-8737248

Encls.

PA04.LTR



V. Ships

V. Ships Leisure USA LLC
1850 SE 17 Street
Suite 200
Fort Lauderdale, FL 33316

Phone: (954) 284-2056
Fax: (954) 320-6247
vshipsleisureusa@vships.com

An Bord Pleanála,
64, Marlborough Street,
Dublin 1.

Date: 26th February 2014

RE: GALWAY HARBOUR EXTENSION (PLANNING APPLICATION PI 61.PA.0033)

Dear Sir,

I have become aware of the plans to extend the harbour at Irelands most talked about coastal destination, Galway. It is in connection to this planning application that I write to you to convey our most sincere support for this visionary development.

V. Ships is a global corporation, primarily engaged in the technical management and crewing of ships. In 2011, one of our cruise ships, MV Explorer called to the scenic seaport at Galway. The ship is owned by the Institute for Shipboard Education and accredited by the University of Virginia and caters for up to 800 university students, better known as the *Semester at Sea*. Our port stay was memorable, meeting the president of the National University of Ireland Galway Dr. James Browne and his academic staff along with the many delights that the city of Galway had to offer the students. The feedback we received from the students and the on-board deans was exemplary.

We would like to place Galway on a regular itinerary for this ship as we found both port and university collaborated very well in welcoming us into the maritime city. But for this to happen, the ships need to be able to moor alongside the quay and for the passengers to disembark the ship via gangway and not by tender. Tendering of passengers ashore from anchored ships introduces unnecessary risks for our passengers.

The harbour extension which I have read on-line and in some maritime journals will be a revolutionary step in growing the cruise and other commercial business at the western seaport. We have been involved in other seaport developments throughout the world such as in Monaco and I believe that Galway is the gem in the crown for cruise tourism and will grow steadily once the ships can moor alongside the quay.

I complement those involved in bringing this proposed development to design and planning and I reiterate our complete support for the improvement of docking facilities at Galway which can accommodate cruise ships and many other vessel types.

Yours faithfully

Jim Barreiro de Leon
Managing Director
V Ships Leisure USA

AN BORD PLEANALA	
Received:	5/3/14
Fee:	€50
Receipt No:	B.123426

AN BORD PLEANALA	
TIME	BY park
05 MAR 2014	
LTR-DATED	FROM [initials]
PL	